

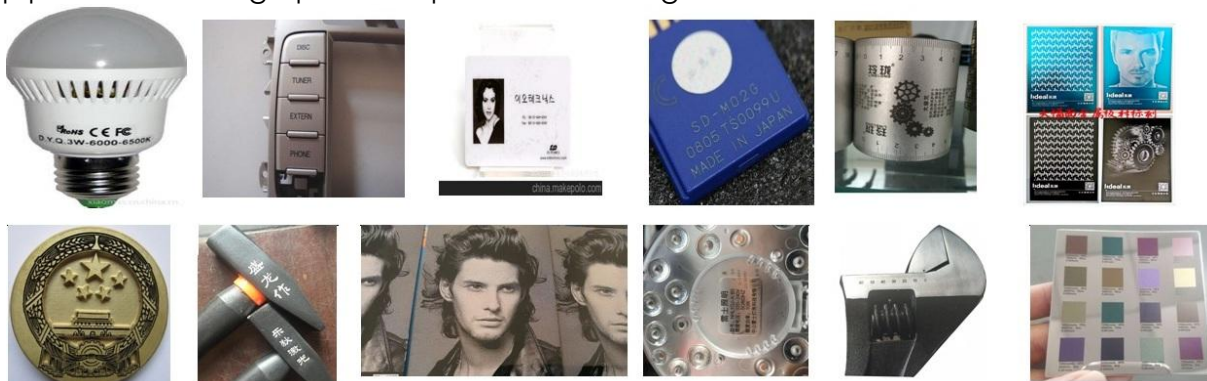


FIBER MARKING LASER MACHINE MODEL : LF20 -IPG



MACHINE APPLICATION & CUTTING SAMPLES:

Plastic Translucent Buttons, IC Chips, Digital Products Parts, Jewelry, Sanitary Ware, Measuring Tools Cutting Tools, Watch Glasses, Copper Stamped Seals, Electrical Appliances, Electronic Components, Hardware Accessories, Hardware Tools, Mobile Communication Components, Automobile Parts and Accessories , plastic products, medical equipment, building materials, pipe and other high-precision products marking.



TECHNICAL CONFIGURATIONS:

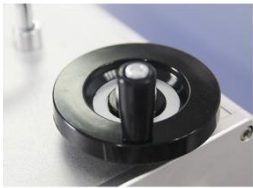
	COMPONENT	DESCRIPTION	BRAND / ORIGIN
	20W IPG LASER SOURCE	100,000 hours life time more stable and cost-efficient maintenance free	 IPG – GERMANY
	GALVO HEAD	High Speed galvanometer scan head adopting SINO Technology , digital signal with High precision.	 SINO-ITECH HONGKONG
	F-THETA LENS (II-VI OPTICAL SYSTEM)	High durability and High sharpness manufactured by II-VI Optical System Company. These lenses not only ensure the high quality of the device, but also long-term efficiency and low handling costs of the optical accessories.	 AIM photonics AMERICA
	EZCAD CONTROL CARD	The control card adopts latest version of BJJ CZ Software. EZCAD control program work on WIN 7/8/10 system.	EZCAD SOFTWARE
	2D WORKTABLE (Y,X AXIS Moving Table)	Adopt imported part, high speed & high accuracy. Easy and convenient to adjust the laser distance.	 G-WEIKE



RED LIGHT POINTER

Red Light Pointer is widely used to show the laser path.

G·WEIKE[®]
LASER 金威刻
G-WEIKE



LIFTING HANDLE

Adjust the handle; laser focus distance can be adjusted easily. It is convenient to operate.

G·WEIKE[®]
LASER 金威刻
G-WEIKE



FOOT PEDAL

It is easy and convenient to run the machine.

G·WEIKE[®]
LASER 金威刻
G-WEIKE



WATER COOLING SYSTEM

Water chiller adopts double temperature water chiller, one is cooling laser and the other is cooling cutting head

G·WEIKE[®]
LASER 金威刻
G-WEIKE



RELATED PARAMETERS :

Laser Type	: Fiber Marking Laser
Model	: LF20
Laser output power	: 20W
Laser wave length	: 1064nm
Optic quality	: M2
Laser adjust Q frequency	: 20kHz~200kHz
Standard Engraving area	: 110mm
engraving depth	: ≤1mm
Whole machine power	: 1000W
Minimum line width	: 0.01mm
Repeated positioning precision	: ±0.01mm
Power supply	: AC220V/50Hz 5A
Working Area	: 140 x 140 mm
Engraving speed	: 600-1000characters/s
Dimension(L*W*H) Desktop	: 760 x 600 x1500mm / 80kg.
Wood Case Dimension	: 900 x 750 x 1300mm / 150kg.
Water cooling system	: Air cooling
Brand New	: China

OPTIONAL:

- **Rotary (Rotary Chuck + Socket + bottom plate)**
- **Auto focus**
- **3D Electrical Up-down Working table**





DELIVERY & INSTALLATION:

1. Delivery at your site within UAE.
2. Training & Installation by our skilled Engineers at your site.

AFTER SALES SERVICE:

1. One year warranty (One year spare parts & free Service).
Except for consumable items e.g Lens etc.
2. Complaint will be solved within 12 working hours, by our in-house skilled Engineers.

MACHINE TESTING & EVALUATION:

From the mechanical debugging aspects, our machine precision is better than other suppliers for:

- Using the following instruments to test the mechanical precisions, including:
- Collimation degree test
- Straightness accuracy test
- Parallelism test
- Mable measuring scale and dial indicator
- Laser interferometer instrument
- Gantry Milling Machine to guarantee machine cutting accuracy

Machine Video:

<https://www.youtube.com/watch?v=djSqptsAc0U>

<https://www.youtube.com/watch?v=rkh5oWdASgl>

